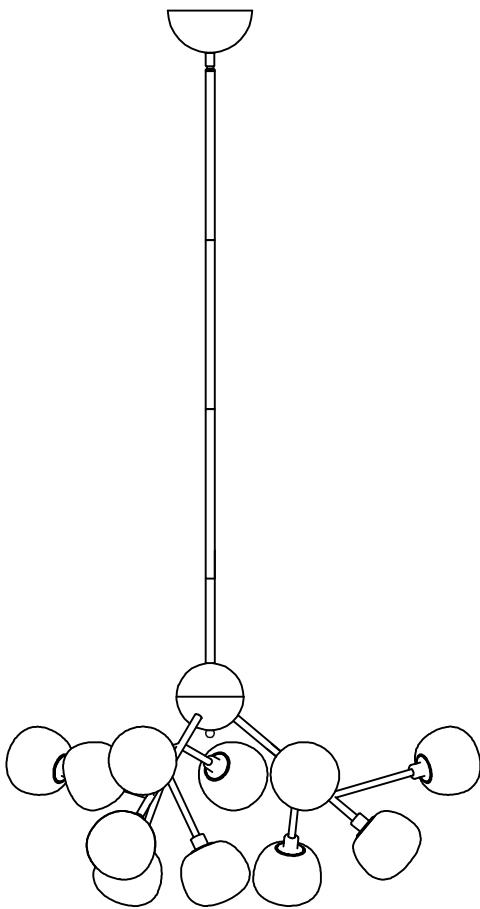


# Contemporary Lighting

PRODUCT NAME: Pod

ITEM NUMBER: E21455-93BKGLD

Please consult your electrician for hanging fixture and wiring.



The fixture is designed to dim with a standard Triac forward phase dimmer. Dimming levels will vary by dimmer.

Below is a list of recommended dimmers:

Lutron MACL-153M

Lutron DVL-153P

Lutron SCL-153P

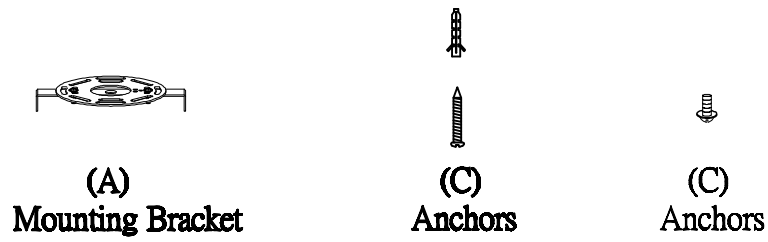
Leviton IPL06-10Z

Leviton 6674-POW

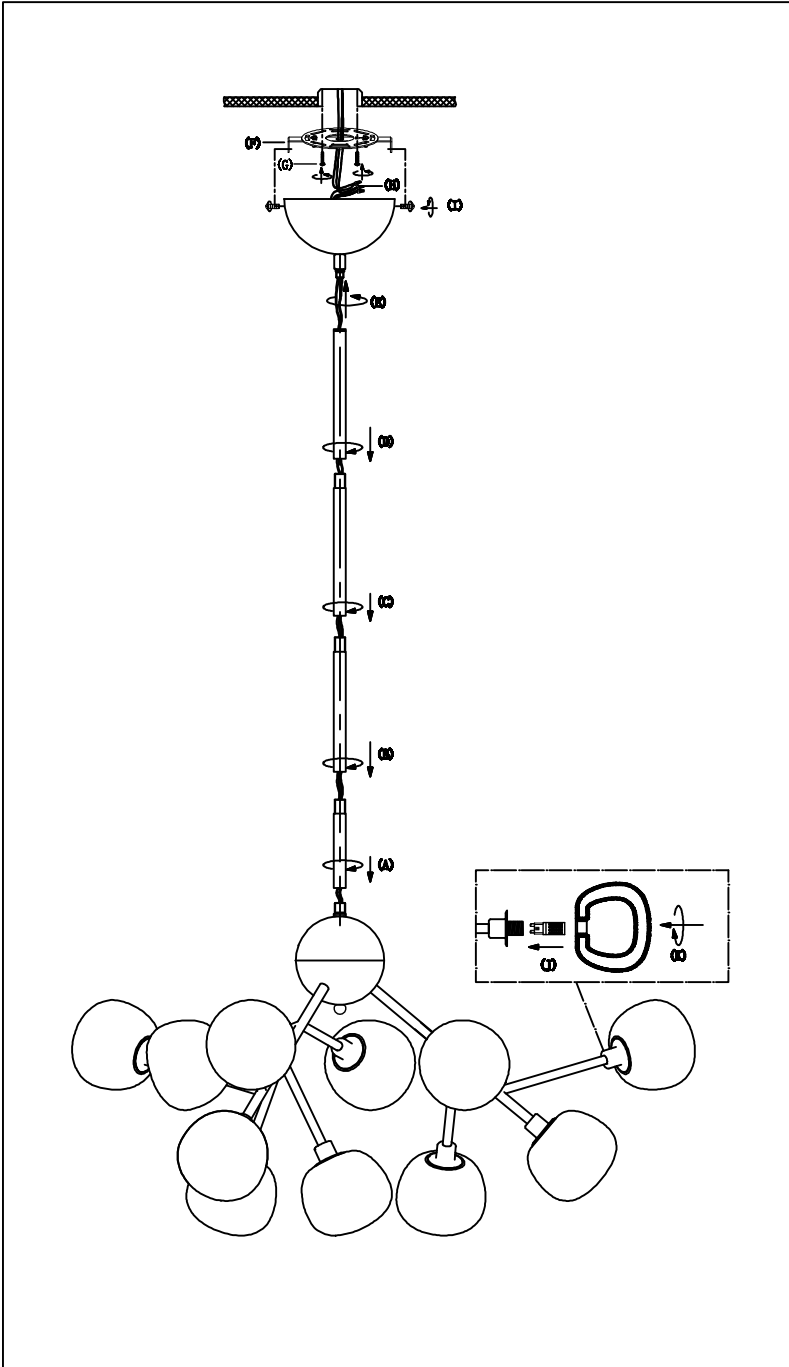
Due to inrush current wattage should not exceed 150 watts of product for a 600 watt dimmer.

Bulb(included): 12 x 4W LED G9 bulbs

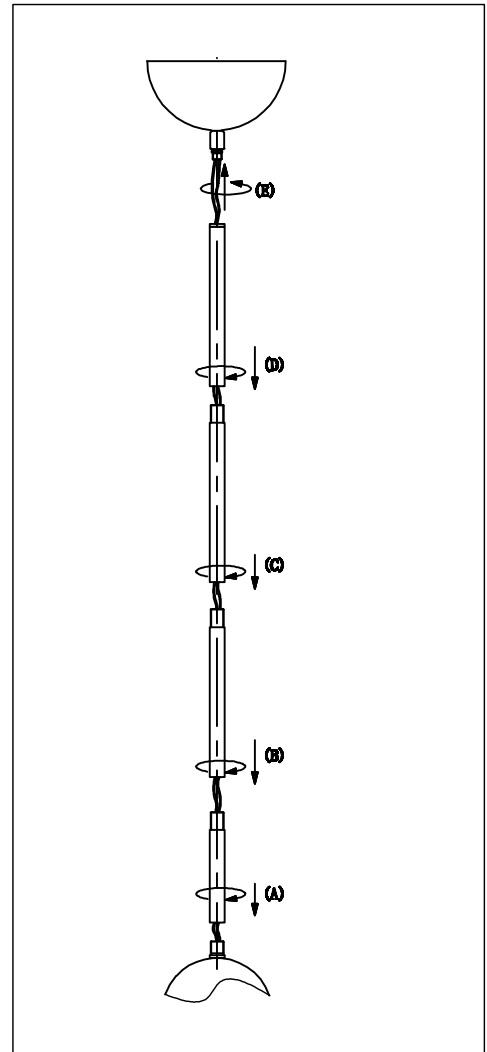
**IMPORTANT: Turn off the power at the main fuse or circuit breaker box before starting installation**



**Locate all hardware & components before discarding packaging**



1.)

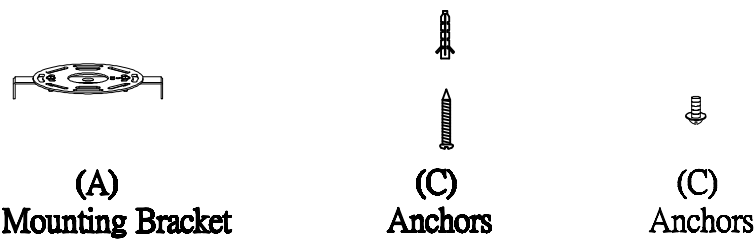


**Step.1: Run wire through stems and combine stem lengths to meet desired mounting height.**

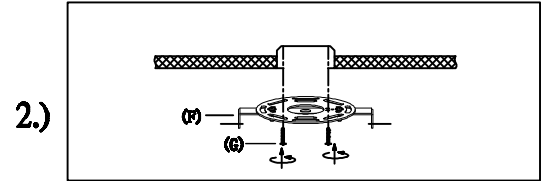
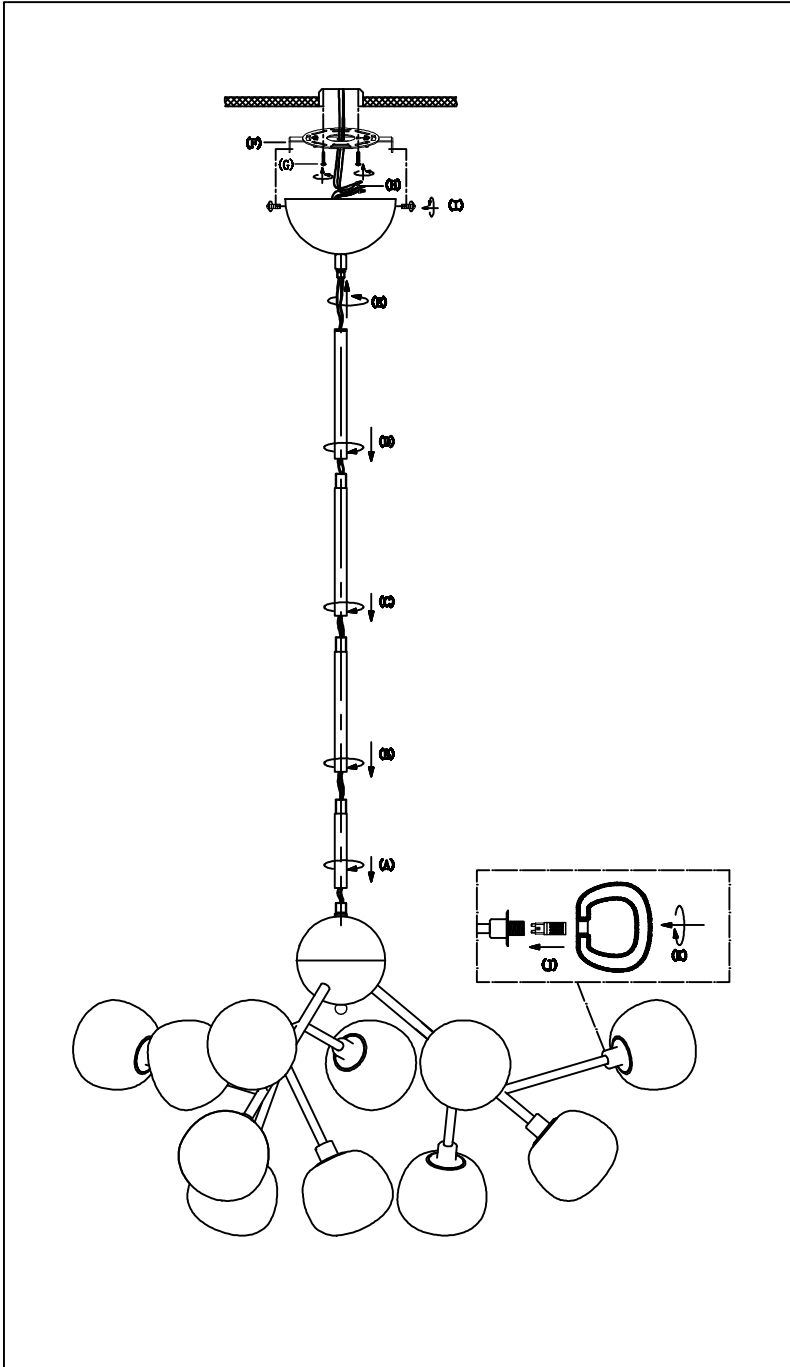
**Cleaning & Care:**

Clean with soft cloth and a mild detergent.  
Do not use abrasive cleaner.

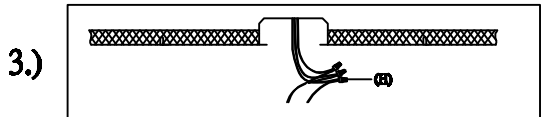
**IMPORTANT: Turn off the power at the main fuse or circuit breaker box before starting installation**



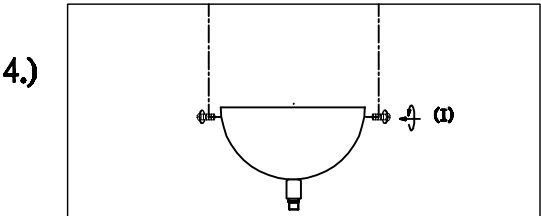
**Locate all hardware & components before discarding packaging**



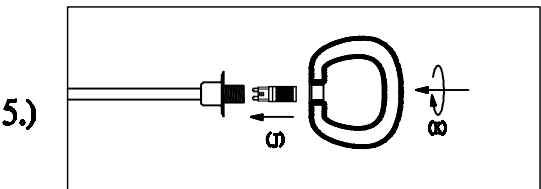
**Step.2: Remove mounting bracket (F) from fixture and install to electrical box.**



**Step.3: Wire fixture to wires (H) in outlet box. Copper wire is for Ground.**



**Step.4: Adjust wire length to desired mounting height, and tighten strain relief screws to secure. Install fixture to bracket and tighten screws (I) at the ends of the canopy to secure.**



**Step.5: Install G9 light bulb provided (J) and screw on glass shade (K) .**

**Cleaning & Care:**

Clean with soft cloth and a mild detergent.  
Do not use abrasive cleaner.